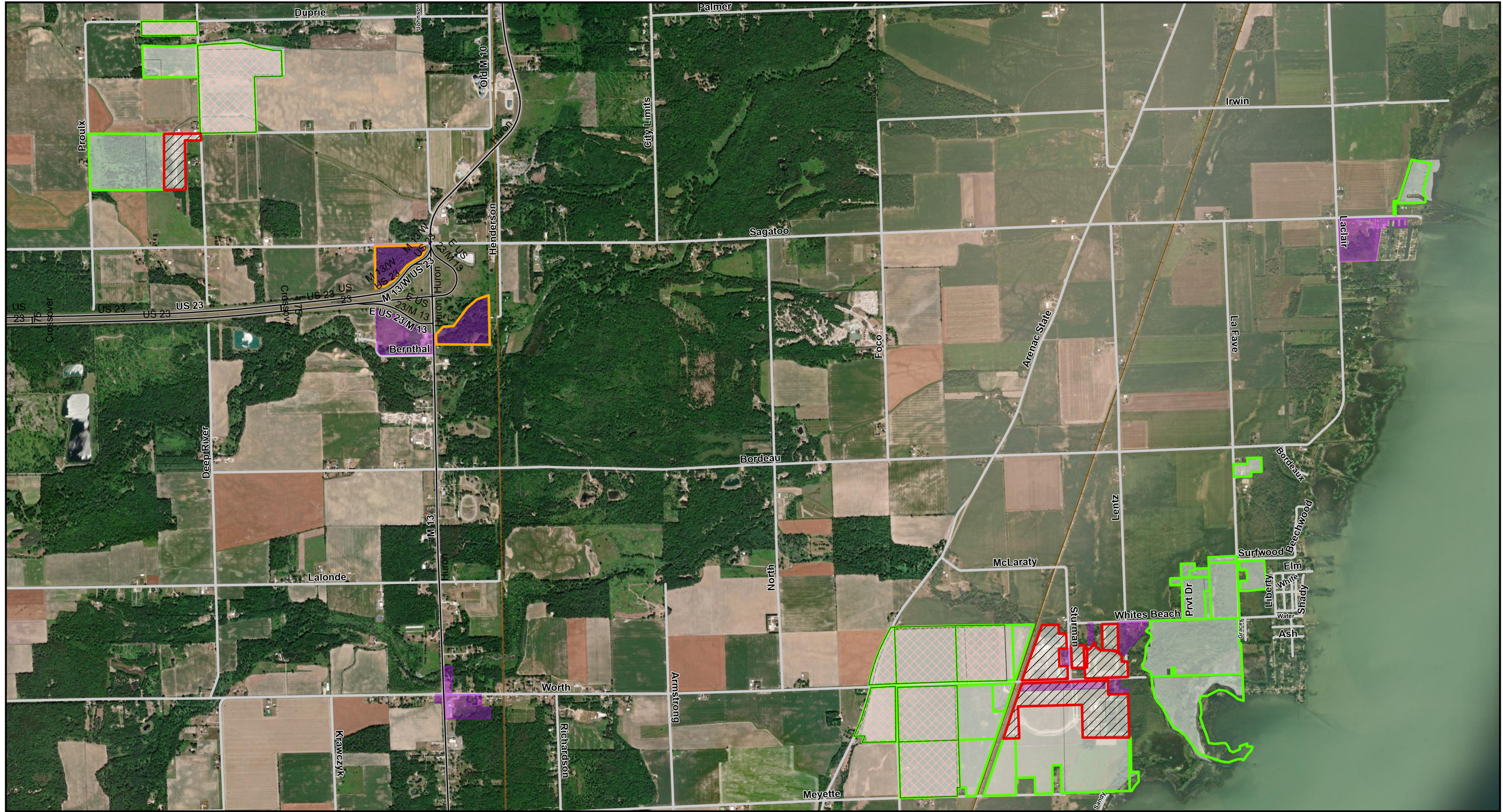


EXHIBIT E – Arenac County Open Lands Bow Season




0 500 1,000 2,000 3,000 4,000 Feet

**Legend**

<b>Zone</b>	MI Permit	*Farm Leased
Bow	Non Trust	(*Permission required until harvest)
No Hunting	Land In Trust	


# Deer Season 2025 ( Sept.4th- Oct.31st )

## SCIT Members Hunting Areas Saganing



N

The Saginaw Chippewa Indian Tribe makes no warranty expressed or implied, regarding the accuracy, completeness or usefulness of the information presented. Users of this information assume all liability of its fitness for a particular use.



Source: SCIT\_Data 2025